



OWNER'S MANUAL

Customer Service AU: 1300 306 062 | NZ: 0800 483 6789

table of contents

Safety Precautions and Usage Statements	1-2
Parts List	3
Base Overview	4
Quick Reference Guide	5
Installation Guide	6-7
Remote Control	8-9
Remote Control Pairing	10
Emergency Battery Backup Box	11
Connecting Strap	12
Syncing Two Bases	13
Headboard Brackets (not included)	14
Troubleshooting	15

safety precautions and usage statements

Attention: Important Safety Disclaimers

Read all instructions before using your TEMPUR ERGO™ adjustable base.

SAVE THESE INSTRUCTIONS.

To reduce the risk of shock, burns, fire or injury:

Always unplug the base from the electrical outlet before servicing any part of the base. To reduce risk of electric shock, unplug the base before cleaning. To safely disconnect, ensure the base is in a flat position with all motors off, and unplug from power source.

Keep the power cord away from heated surfaces. Never operate the base when the air openings are blocked. Keep air openings free of lint, hair and the like. Do not drop or insert any object into any opening.

Discontinue use of the bed base and contact a qualified service center if: it has a damaged cord or plug, is not working properly, or has been dropped into water.

Only use this bed base for its intended use as described in this manual. Do not use accessories/attachments that are not recommended by the manufacturer.

Close supervision is required when the bed base is used by or near children, convalescents or disabled persons.

Outlet Safety:

For optimal safety and operation, plug bed base into a surge protector (not included).

The bed base should only be plugged directly into a wall outlet or surge protector (recommended). Improper connection of the equipment can result in the risk of electrical shock, electrical fire or faulty operation of this bed base. If the plug does not fit your outlet, contact a qualified electrician to install a suitable outlet. Unauthorized modification or failure to use a wall outlet or surge protector could void the electrical portion of your warranty.

Warranty Warning:

Do not open or tamper with control box, motors, or remote (with the exception of battery compartments). The warranty will be void if the internal workings of these components are tampered with.

In-Home Use and Hospital Disclaimer:

The TEMPUR-PEDIC ERGO™ adjustable bases are designed solely for in-home use. This base was not designed as a hospital bed and is not designed to meet hospital standards. Do not use this base with TENT TYPE oxygen therapy equipment or near explosive gases.

Children and Small Pets:

Children and pets can be crushed or killed if they become entrapped in moving parts of the bed. Before you reposition the base, check to be sure children and small pets are not near or under the base. *Do not teach children to operate the remote.*

Immediately dispose of all packaging materials as they may pose a smothering risk to small children and pets.

This appliance is not intended for use by persons (including children) with reduced physical, sensory or mental capabilities, or lack of experience and knowledge, unless they have been given supervision or instruction concerning use of the appliance by a person responsible for their safety. Children should be supervised to ensure that they do not play with the appliance.

Safety Features:

Manual operation - If something gets caught in the platform when flattened, you can manually raise the platform up by lifting at both the head and foot to relieve pressure and allow for release.

Child-lockout - This remote control is programmed with a child-lock safety feature. Information on activation and deactivation of this feature can be found on the Remote Control page(s) and on the back of your remote control.

Emergency stop - Stop the motion of the platform by pressing any button on the remote control or by pushing the button on the Battery Backup Box located underneath the base.

Power outage - Use the "Emergency Battery Backup Box" as a temporary power source to get the base to a desired position. Instructions on how to operate the Battery Backup Box are on the Emergency Battery Backup page(s).

Power Ratings:

INPUT: AC 100-240V 50/60 HZ 2.0A
OUTPUT: DC 29V 2.0A
WATTS: 58W

Product Ratings:

The lift motors are not designed to operate continuously for more than two [2] minutes in an eighteen [18] minute time period or approximately 10% duty cycle. Attempting to circumvent or exceed this rating will shorten the

safety precautions and usage statements

life expectancy of the product and may void the warranty.

The massage motors are not designed to operate continuously for more than 30 minutes at a time. Please allow the massaging system to rest for 30 minutes after automatic massage shut off before restarting.

Weight Limits:

The recommended weight limits on the TEMPUR-PEDIC ERGO™ are:
Twin Long / Full / Queen / King / Split CA King / CA King: 700 pounds.

Maximum weight the bed can support per person is 275 pounds with the weight evenly distributed across the head and foot sections. This product is not designed to support or lift this amount of weight in the head or foot sections alone. NOTE: Exceeding the recommended weight restrictions could damage your TEMPUR-PEDIC ERGO™ and void your warranty. For best performance, you should enter and exit the TEMPUR-PEDIC ERGO™ while it is in the flat or fully lowered position.

TEMPUR-PEDIC ERGO™ fits easily inside bed frames, furniture beds and platform beds that are certified to hold a minimum of 900 pounds. If using this adjustable base without the legs and placing directly on a bed frame or platform bed, cross-bed supports (slats) are strongly recommended to ensure TEMPUR-PEDIC ERGO™ maintains stability during operation.

Exceeding this weight restriction could damage the bed and/or cause injury and will void the warranty.

Acoustics:

In normal base operation the wheels, which allow the bed to maintain its distance from the wall, will make contact with the steel platform supports of the base creating a contact noise. When entering, exiting or shifting weight on the base, this contact noise may be audible as the wheels make contact. This is normal.

Fabric Care:

To prolong the life of your fabric, protect from direct sunlight whenever possible. For spot cleaning, wipe area with a light damp sponge or vacuum with a soft brush attachment to remove particles. Keep at a minimum of 30cm (12 inches) away from direct heat sources.

For deeper cleaning, blot liquid spills with a clean dry cloth. Wipe with a clean cloth dampened with warm water. Do not wet excessively. A soft bristle brush may be used to remove ingrained soil. Avoid scratching by gentle brushing. Wipe with a clean cloth dampened with warm water to remove residues after

brushing. Dry in shade away from direct heat.

If persistent marks remain visible after cleaning, seek professional advice.

FCC Compliance:

NOTE: This equipment has been tested and found to comply with the limits for a Class B digital device, pursuant to part 15 of the FCC Rules. These limits are designed to provide reasonable protection against harmful interference in a residential installation. This equipment generates, uses and can radiate radio frequency energy and, if not installed and used in accordance with the instructions, may cause harmful interference to radio communications. However, there is no guarantee that interference will not occur in a particular installation. If this equipment does cause harmful interference to radio or television reception, which can be determined by turning the equipment off and on, the user is encouraged to try to correct the interference by one or more of the following measures:

- Reorient or relocate the receiving antenna.
- Increase the separation between the equipment and receiver.
- Connect the equipment into an outlet on a circuit different from that to which the receiver is connected.
- Consult the dealer or an experienced radio/TV technician for help.

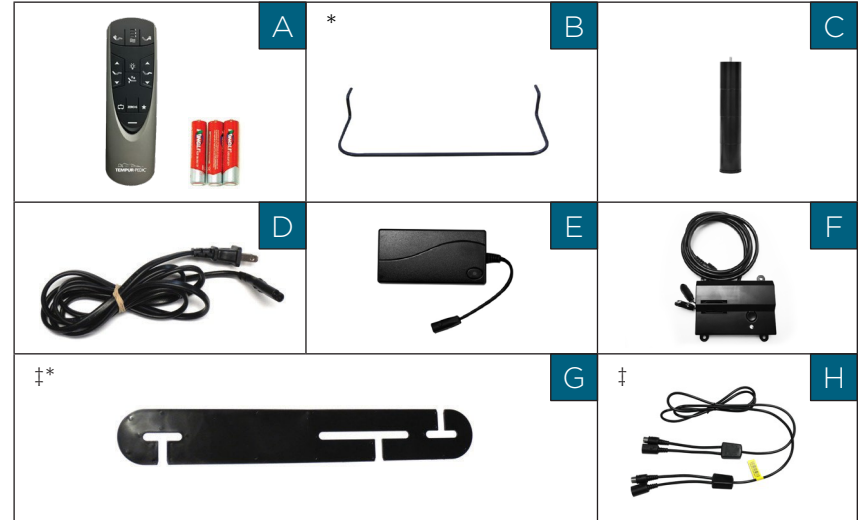
CAN ICES-3 (B)/NMB-3(B)

parts list

Before discarding the packing materials, ensure all the parts are accounted for.

All electronics and components that need to be installed are located in boxes under the base or attached to the frame.

- A) Wireless Remote Control (1) AAA Batteries (3)
- B) Mattress Retainer Bar (1)*
- C) Legs (6)
- D) Power Cord (1)
- E) Power Supply (1)
- F) Battery Backup Box (1) (9-Volt batteries not included)
- G) Connecting Strap †*
- H) Sync Cord †



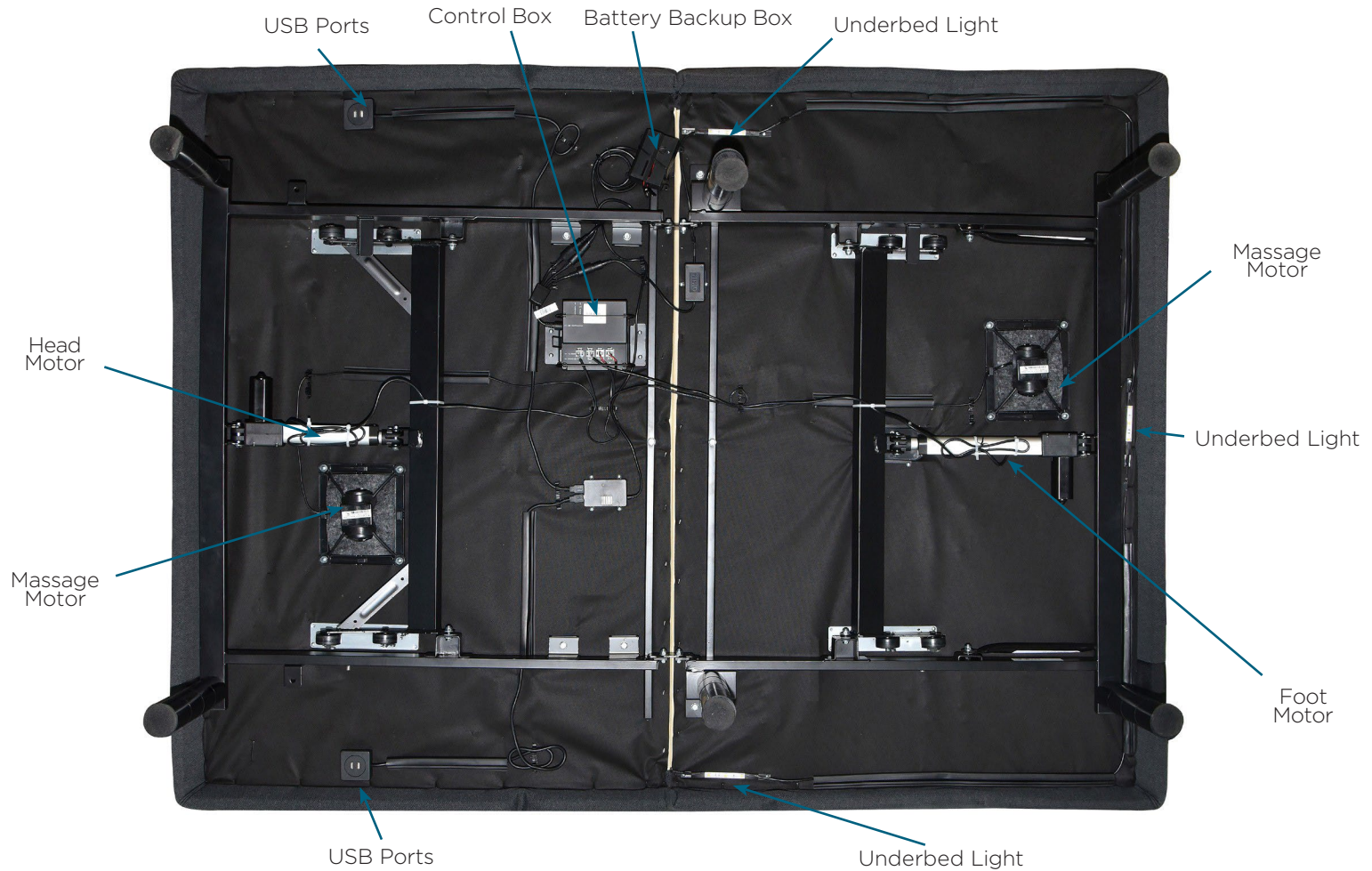
Miscellaneous Parts (not included):

- Surge Protector (1)
- 9 Volt Batteries (2)

- * These items are attached to the base for shipping purposes.
Carefully remove from base and set aside.
- † Only included in Twin Long, and California King Split bases.

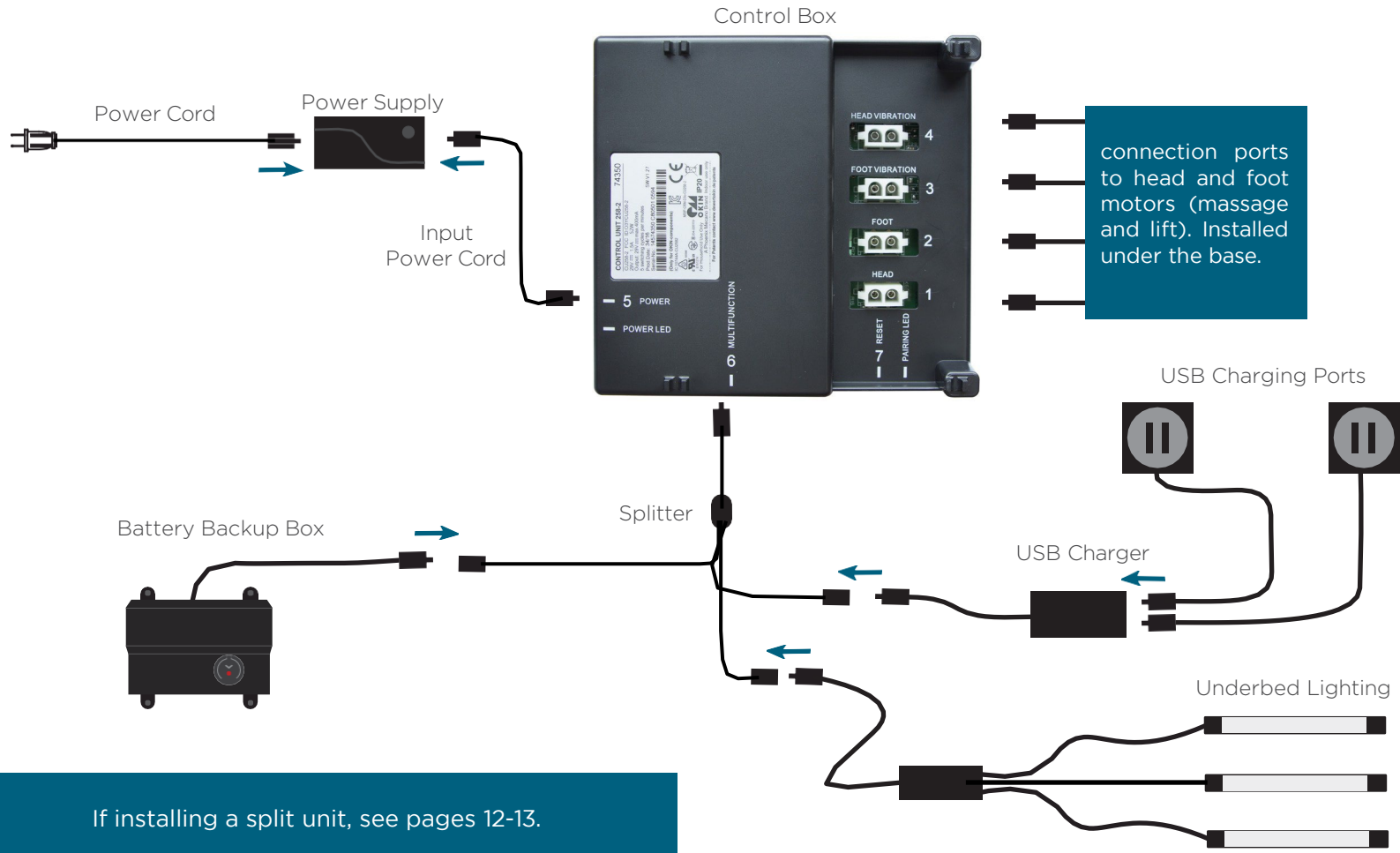
IMPORTANT! For your safety, read the owner's manual carefully and completely before operating this product. Electric shock may occur if electrical components are not installed or operated according to these guidelines.

base overview



quick reference guide

Not to scale. For illustration purposes only. Read all instructions before beginning installation.



installation guide

Always use two people when setting up the base.

STEP 1

Place the bed base box in a desired location with the bottom of the box facing up.

Remove the binding straps and packing materials, making sure not to puncture the box with any sharp objects.

STEP 2

Remove the bed base from the box. Unfold the bed making sure to keep the bottom of the bed facing upwards.



STEP 3

To install headboard brackets (sold separately), see instructions on page 14.

Legs are shipped fully assembled. Alternative heights in 3" increments can be achieved by removing leg segments.

To install the legs, thread the leg into frame, and tighten by hand. **Do not over tighten.**



STEP 4

If installing a split unit, see page 13.

Locate the battery backup box and install (2) 9-Volt batteries (not included).

(For operating instructions see page 11).



STEP 5

Uncoil input power cord (connected to control box's power port) and plug into power supply.



STEP 6

Uncoil the power cord and connect to the power supply. Place power supply on the ground and extend from the base. Ensure that the power supply and all attached cords are directed toward the desired surge protector.



installation guide

STEP 7

Carefully flip the base over on to its legs. Important: Two people are required to move the bed base. Do not drag across the floor. Do not rest frame on its side, excessive pressure may damage the legs.

STEP 8

Plug the power cord into a power source. A surge protector is recommended.

STEP 9

Ensure batteries are correctly installed in the back of the remote.

Quickly test functions to verify proper setup before placing mattress on base. Return the base to a flat position before placing the mattress on top.

STEP 10

To install the mattress retainer bar, insert each end of the bar into the holes at the foot of the platform.



Setup is now complete! Test all functions on remote.



remote control

Remote Control arrives paired to the adjustable base.
Three (3) AAA batteries are required to operate the remote.



MESSAGE



Head Zone Massage Control

Activates simple steady-state massage and toggles through 2 intensity levels . Low, high and off.



Foot Zone Massage Control

Activates simple steady-state massage and toggles through 2 intensity levels. Low, high and off.



Massage Wave Mode Control

Turns on and activates programmed massage mode . Toggles wave modes 1, 2 ,3 and off . Intensity default is low .

There are 3 possible wave massage modes and 2 intensity levels to choose from . Press the Wave Massage Mode Selector to choose the desired mode (1,2,or 3), then use the Head Massage and/or the Foot Massage buttons to cycle through the available intensity levels . Once the massage mode is chosen, it will run for 30 minutes unless it is cancelled by pressing the Wave Massage Mode Selector button repeatedly until massage stops .

If one of the wave massage modes is not needed, pressing Head and/or Foot Massage buttons will initiate massage for those sections and cycle through 2 different intensity levels as well as "OFF" .

remote control

Remote Control arrives paired to the adjustable base.
Three (3) AAA batteries are required to operate the remote.

ADJUST



Head Position Adjustments

Use to raise and lower the head section of your adjustable base.



Foot Position Adjustments

Use to raise and lower the foot section of your adjustable base.

* Not user programmable.

‡ Can be reprogrammed to user desired position.

The ZERO-G®, TV in Bed, Anti-Snore, and Favorite 1 in bed presets can be re-programmed to any position chosen by the user. Simply adjust the bed to the desired position, then hold any of the 4 buttons down until the remote backlight flashes twice. The button is now re-programmed.

To restore the buttons to their original positions, depress the One-touch Flat and Zero-G® buttons simultaneously for 5 seconds. The remote backlight will flash twice to indicate the original positions have been restored.

PRESET

ZERO G

Zero-G® ‡

Adjusts your legs to relieve pressure off the lower back.



Flat *

One-Touch Flat lowers head and foot to flat position and turns off massage (if running).



TV in Bed Preset Position ‡

Brings head and foot into position for viewing TV.



Anti-Snore Preset Position ‡

Raises the head of the bed slightly to help open airways.



Favorite 1 Preset Position ‡

Reprogrammable Preset Position.



Underbed LED lighting *

Turn on/off underbed LED lighting.

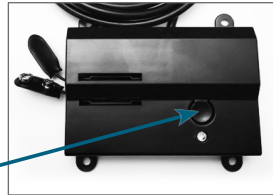
remote control pairing

The original remote that comes in the box is already paired to the adjustable base. No further action is required. In the event that the remote is not paired with the base, follow the steps below.

STEP 1

Locate the battery backup box and press the button TWICE. A light on the battery back up box will illuminate.

Battery
backup box
button



STEP 2

Remove the back cover of the remote, press and hold down the PAIR button. The PAIR button will illuminate blue and start flashing. When the PAIR button stops flashing, the illuminated light on the battery backup box will go out. Release the PAIR button. The remote is now paired to the adjustable base.

PAIR
Button

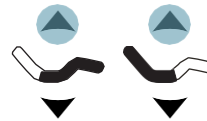


*ALTERNATE REMOTE PAIRING PROCESS

Locate the control box (see parts list on page 4) and press the button twice. A green LED light will illuminate on the control box. On the back of the remote, press and hold the PAIR button. The PAIR button will illuminate blue and start flashing. When the PAIR button stops flashing, the green LED light on the control box will go out. Release the PAIR button. The remote is now paired to the adjustable base.

Child Lock Feature

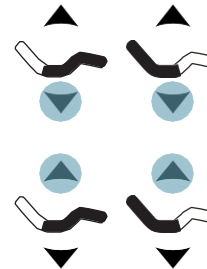
Activate Child Lock



Press and hold the HEAD UP and FOOT UP buttons together for 3 seconds until the remote backlight flashes twice.

The remote is now in Child Lock. Pressing any buttons while in Child Lock will yield no movement to your adjustable base.

Deactivate Child Lock



Press and hold the HEAD DOWN and FOOT DOWN buttons together for three (3) seconds, then hold HEAD UP and FOOT UP for three (3) seconds until the remote backlight flashes twice.

The remote is no longer in Child Lock. The remote and adjustable base will work normally.

STEP 3

Test all remote functions. If the remote buttons do not impact the adjustable base movements, please repeat the process again or call Tempur-Pedic customer service: AU: 1800 763 498 | NZ: 0800 452 914

emergency battery backup box

Two (2) 9 Volt batteries are required to operate the battery backup box feature and are NOT included.

OVERVIEW

For emergency use only, in case of a power outage.

In the event that the base is stuck in an articulated position during a power outage, the battery backup box will return the base to a flat position. Batteries are not to be used for normal operation of the base.



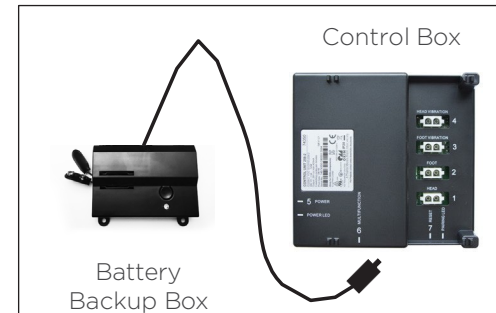
STEP 1

Install the 9 Volt batteries into the provided battery backup box.

Do not mix brand name batteries.

STEP 2

Press the button on the battery backup box to lower the base to flat position.



connecting strap (optional)

Connecting straps are secured to the base frame upon delivery.

OVERVIEW

If a split setup is being installed, plastic connecting straps are provided (one per base) to secure the bases together. Use both straps to secure the head and foot portions together.



STEP 1

With the bases in their desired location, slightly loosen both legs to allow the strap to fit on the leg bolt, between the leg washer and frame.



STEP 2

Slide side (a) of the connecting strap onto leg bolt. Swing the strap and connect side (b) to the leg bolt. Secure the strap by shifting to the left.



STEP 3

Re-tighten legs. **Do not over tighten.** Use the remaining strap on other end of the base.

syncing two bases (optional)

A Sync Cord is included with Twing Long and Split Cal King size bases.

The Sync Cord connects the two control boxes to a single remote for the synchronization of two bases.

STEP 1

Unplug the base(s) from power source.

STEP 2

Disconnect the battery backup box cable from each control box or splitter cable (make note where the cable was plugged in).

STEP 3

Connect the male end of each sync cord to control box or splitter cable. Insert it into the same port that you disconnected the battery backup box from in Step 2.

STEP 4

Connect each battery backup box male connection to the sync cord female connection (Refer to illustration at right).

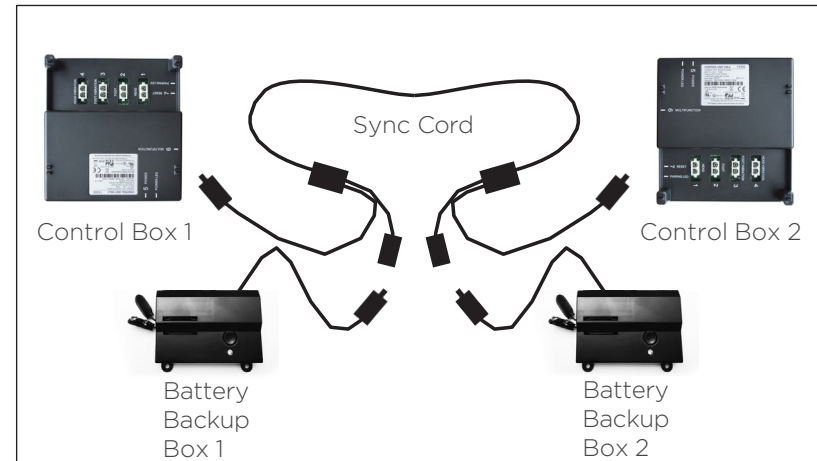
STEP 5

Plug bases back into the power source.

STEP 6

Check to ensure all cords are securely attached. Both remotes will now operate both bases simultaneously.

The system is now linked. Pressed buttons on either remote will control the two bases simultaneously.



PERFORMANCE NOTES

If bases become mismatched, return both bases to the flat position to re-sync the bases.

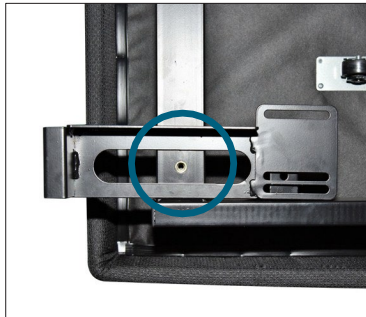
headboard bracket installation guide (optional)

Headboard Brackets are an optional accessory and are not included.

A hex key is included with the accessory kit to complete installation.

STEP 1

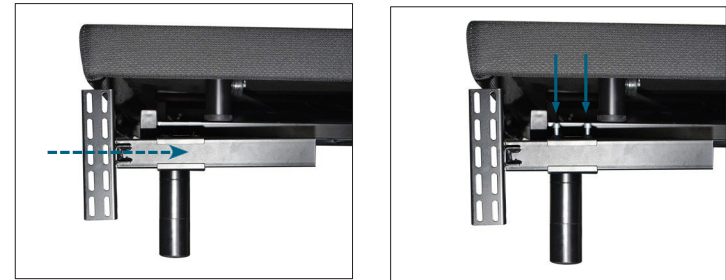
- a.) Align the hole in the bracket to the brass sleeve into which the leg threads. Hold the bracket in place and screw the leg into the base until it is snug. **DO NOT OVERTIGHTEN.** Too much force may cause the leg to spin freely.
- b.) Align the tab with the hole in the frame (located towards the foot of the base) and use a short bolt, washer and wingnut to secure the bracket. Make sure the bolt is tight.



STEP 2

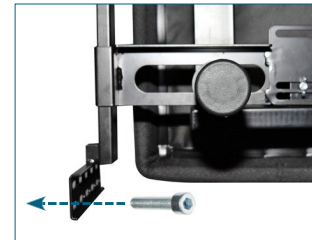
- a.) Measure the distance between the mounting holes on the headboard and install the T-Bracket to accommodate the headboard.

- b.) To install the T-Bracket, slide the T-Bracket through the end of the headboard bracket. Align the flat side of the T-Bracket plate to the mounting holes on the headboard.
- c.) Secure T-Bracket in place by inserting two short screws through top of bracket. Use hex key to tighten screws.



STEP 3

Connect your headboard to the attachment plate using the remaining long screws or hardware that came with your headboard. The heads of the bolts will face outward. Use hex key to tighten bolts.



If one or more functions on the bed base have stopped operating:

ADJUSTABLE BASE

- Check under the bed base to verify that the wired connections are secure and that there are no cords or bedding obstructing the movement of the base.
- Check to ensure the LED light is illuminated on the control box. If there is no light, verify that the input and power cords are properly connected.
- Unplug the base for 60 seconds to reset the electronic components.
- Plug bed base into a different electrical outlet, or test current outlet with another working appliance (a grounded, electrical surge protector is recommended).

REMOTE

- Ensure that your remote batteries are properly installed or do not need replacing.
- Ensure Child Lock feature is not enabled. See page 10 for more information.
- Ensure that the remote control is paired to the bed base.

If your issue is not resolved by following the instructions above, please locate the serial number on the warranty card or back of the remote control and call the customer service team for your region.

For customer support, call Customer Service: 1300 306 062, NZ: 0800 483 6789

Tempur Customer Service

Australia: 1300 306 062

New Zealand: 0800 483 6789

Email: info@tempur.com.au

Web: www.tempur.com.au

