

## OWNER'S MANUAL

TEMPUR Customer Service AU.: 1300 306 062 | NZ: 0800 483 6789

Patent Pending

# table of contents

Safety Precautions and Usage Statements .....	1-3
Parts List .....	4
Base Overview .....	5
Quick Reference Guide .....	6
Installation Guide .....	7-8
Mattress Setup .....	9
Remote Control .....	10-12
Remote Control Pairing .....	13
Emergency Battery Backup Box .....	14
Connecting Strap .....	15
Syncing Two Bases .....	16
Headboard Brackets (not included) .....	17
Troubleshooting .....	18

# safety precautions and usage statements

## Attention: Important Safety Disclaimers

Read all instructions before using your TEMPUR-PEDIC ACTIVEbreeze° ERGO EXTEND™ adjustable base.

### SAVE THESE INSTRUCTIONS.

To reduce the risk of shock, burns, fire or injury:

Always unplug the base from the electrical outlet before servicing any part of the base. To reduce risk of electric shock, unplug the base before cleaning. To safely disconnect, ensure the base is in a flat position with all motors off, and unplug from power source.

Keep the power cord away from heated surfaces. Never operate the base when the air openings are blocked. Keep air openings free of lint, hair and the like. Do not drop or insert any object into any opening.

Discontinue use of the bed base and contact a qualified service center if: it has a damaged cord or plug, is not working properly, or has been dropped into water.

Only use this bed base for its intended use as described in this manual. Do not use accessories/attachments that are not recommended by the manufacturer.

Close supervision is required when the bed base is used by or near children, convalescents or disabled persons.

### Outlet Safety:

**For optimal safety and operation, plug bed base into a surge protector (not included).**

The bed base should only be plugged directly into a wall outlet or surge protector (recommended). Improper connection of the equipment can result in the risk of electrical shock, electrical fire or faulty operation of this bed base. If the plug does not fit your outlet, contact a qualified electrician to install a suitable outlet. Unauthorized modification or failure to use a wall outlet or surge protector could void the electrical portion of your warranty.

### In-Home Use and Hospital Disclaimer:

The TEMPUR-PEDIC ACTIVEbreeze° ERGO EXTEND™ adjustable bases are designed solely for in-home use. This base was not designed as a hospital bed and is not designed to meet hospital standards. Do not use this base with TENT TYPE oxygen therapy equipment or near explosive gases.

### Pets and Small Children:

Immediately dispose of all packing materials as they may pose a smothering risk to small children and pets. To avoid injury, it is not advised to allow children and small pets to play on or under the bed. Children should not operate the bed base without adult supervision.

### Safety Features:

Free-release head and foot motors are designed to lower the mattress by retracting only with gravity, never pulling downwards, which minimizes pinch points.

### Power Ratings:

INPUT:	AC 100-240V 50/60 HZ 2.0A
OUTPUT:	DC 29V 2.0A
WATTS:	58W

### Product Ratings:

The lift motors are not designed to operate continuously for more than two [2] minutes in an eighteen [18] minute time period or approximately 10% duty cycle. Attempting to circumvent or exceed

# safety precautions and usage statements

this rating will shorten the life expectancy of the product and may void the warranty.

The massage motors are not designed to operate continuously for more than 30 minutes at a time. Please allow the massaging system to rest for 30 minutes after automatic massage shut off before restarting.

The fans are not designed to operate continuously for more than 600 minutes (10 hours). Please allow the fan system to rest for at least 60 minutes after automatic fan shut off before restarting.

## Weight Limits:

The recommended weight limits on the TEMPUR-PEDIC ACTIVEbreeze° ERGO EXTEND™ are:  
Queen/Long Single/Single: 850 pounds.

Maximum weight the bed can support per person is 350 pounds with the weight evenly distributed across the head and foot sections. This product is not designed to support or lift this amount of weight in the head or foot sections alone. NOTE: Exceeding the recommended weight restrictions could damage your TEMPUR-PEDIC ACTIVEbreeze° ERGO EXTEND™ and void your warranty. For best performance, you should enter and exit the TEMPUR-PEDIC ACTIVEbreeze° ERGO EXTEND™ while it is in the flat or fully lowered position.

TEMPUR-PEDIC ACTIVEbreeze° ERGO EXTEND™ fits easily inside bed frames, furniture beds and platform beds that are certified to hold a minimum of 1000 pounds. If using this adjustable base without the legs and placing directly on a bed frame or platform bed, cross-bed supports (slats) are strongly recommended to ensure TEMPUR-PEDIC ACTIVEbreeze° ERGO EXTEND™ maintains

stability during operation.

Exceeding this weight restriction could damage the bed and/or cause injury and will void the warranty.

## Acoustics:

In normal base operation the wheels, which allow the bed to maintain its distance from the wall, will make contact with the steel platform supports of the base creating a contact noise. When entering, exiting or shifting weight on the base, this contact noise may be audible as the wheels make contact. This is normal.

In normal operation of the Activebreeze system, fan noise from the system can be expected especially at higher speeds. When entering, exiting, shifting weight or articulating the base, fan noise may change slightly due to change of position. This is normal.

## Fabric Care:

To prolong the life of your fabric, protect from direct sunlight whenever possible. For spot cleaning, wipe area with a light damp sponge or vacuum with a soft brush attachment to remove particles. Keep at a minimum of 30cm (12 inches) away from direct heat sources.

For deeper cleaning, blot liquid spills with a clean dry cloth. Wipe with a clean cloth dampened with warm water. Do not wet excessively. A soft bristle brush may be used to remove ingrained soil. Avoid scratching by gentle brushing. Wipe with a clean cloth dampened with warm water to remove residues after brushing. Dry in shade away from direct heat.

If persistent marks remain visible after cleaning, seek professional

advice.

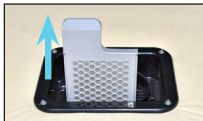
### ACTIVEbreeze® Care:

TEMPUR-PEDIC ACTIVEbreeze® ERGO EXTEND™ are equipped with removeable, washable fan filters. Recommended cleaning interval for the filters is every 6 months or more frequent if necessary. Water and mild detergent can be used to clean the filters. Please dry the filter prior to re-installing. Filters can be removed, cleaned and re-installed following the steps shown below. Note that it is not required to disconnect the hoses prior to cleaning the filter.

- Step 1: Raise the bed to TV Favorite position to provide access to the fan unit.



- Step 2: Remove the filter by grasping the handle and gently pulling up.



- Step 3: Clean the filter with mild detergent and water, drying prior to installation.
- Step 4: Re-install the filter by pushing down until the filter clicks in place.



- Step 5: Return the base to flat position.



CAN ICES-3 (B)/NMB-3(B)

#### FCC Compliance:

This device complies with part 15 of the FCC Rules. Operation is subject to the following two conditions: (1) This device may not cause harmful interference and (2) this device must accept any interference received, including interference that may cause undesired operation.

To comply with the FCC RF exposure compliance requirements, no change to the antenna or the device is permitted. Any change to the antenna or the device could result in the device exceeding the RF exposure requirements and void user's authority to operate the device.

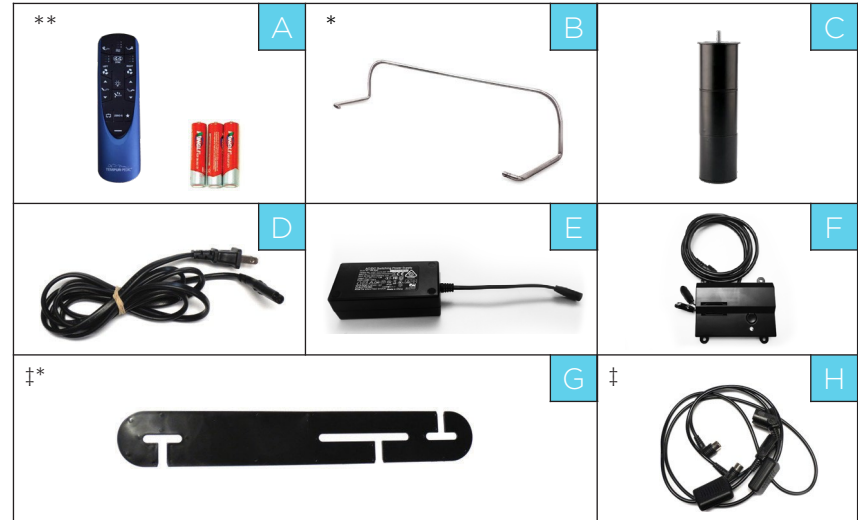
Radio Frequency: 2.4 GHz

# parts list

Before discarding the packing materials, ensure all the parts are accounted for.

All electronics and components that need to be installed are located in boxes under the base or attached to the frame.

- A) Wireless Remote Control (1) AAA Batteries (3)
- B) Mattress Retainer Bar (1)\*
- C) Legs (4)
- D) Power Cord (1)
- E) Power Supply (1)
- F) Battery Backup Box (1) (9-Volt batteries not included)
- G) Connecting Strap †\*
- H) Sync Cord †



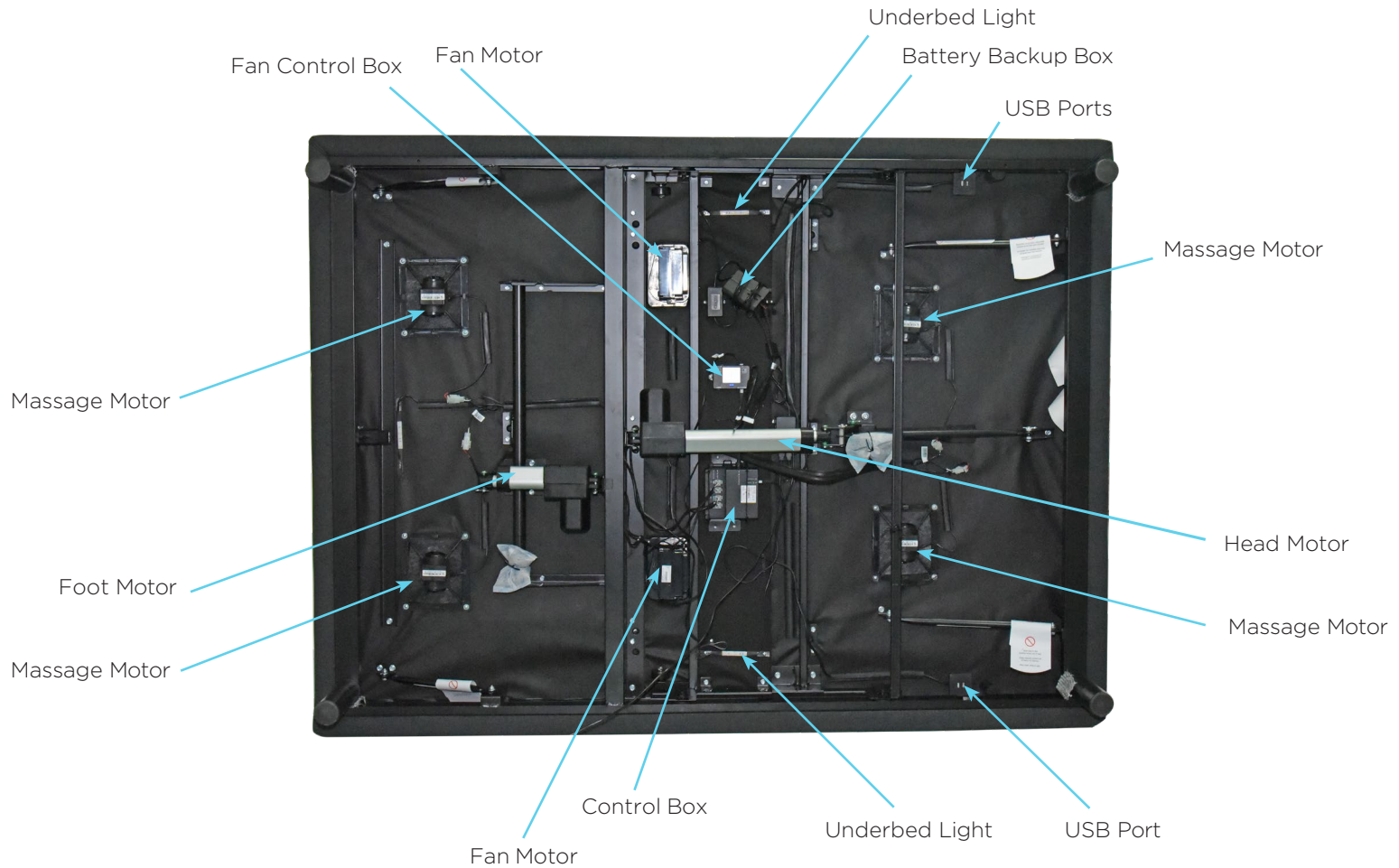
**IMPORTANT!:** For your safety, read the owner's manual carefully and completely before operating this product. Electric shock may occur if electrical components are not installed or operated according to these guidelines.

## Miscellaneous Parts (not included):

- Surge Protector (1)
- 9 Volt Batteries (2)

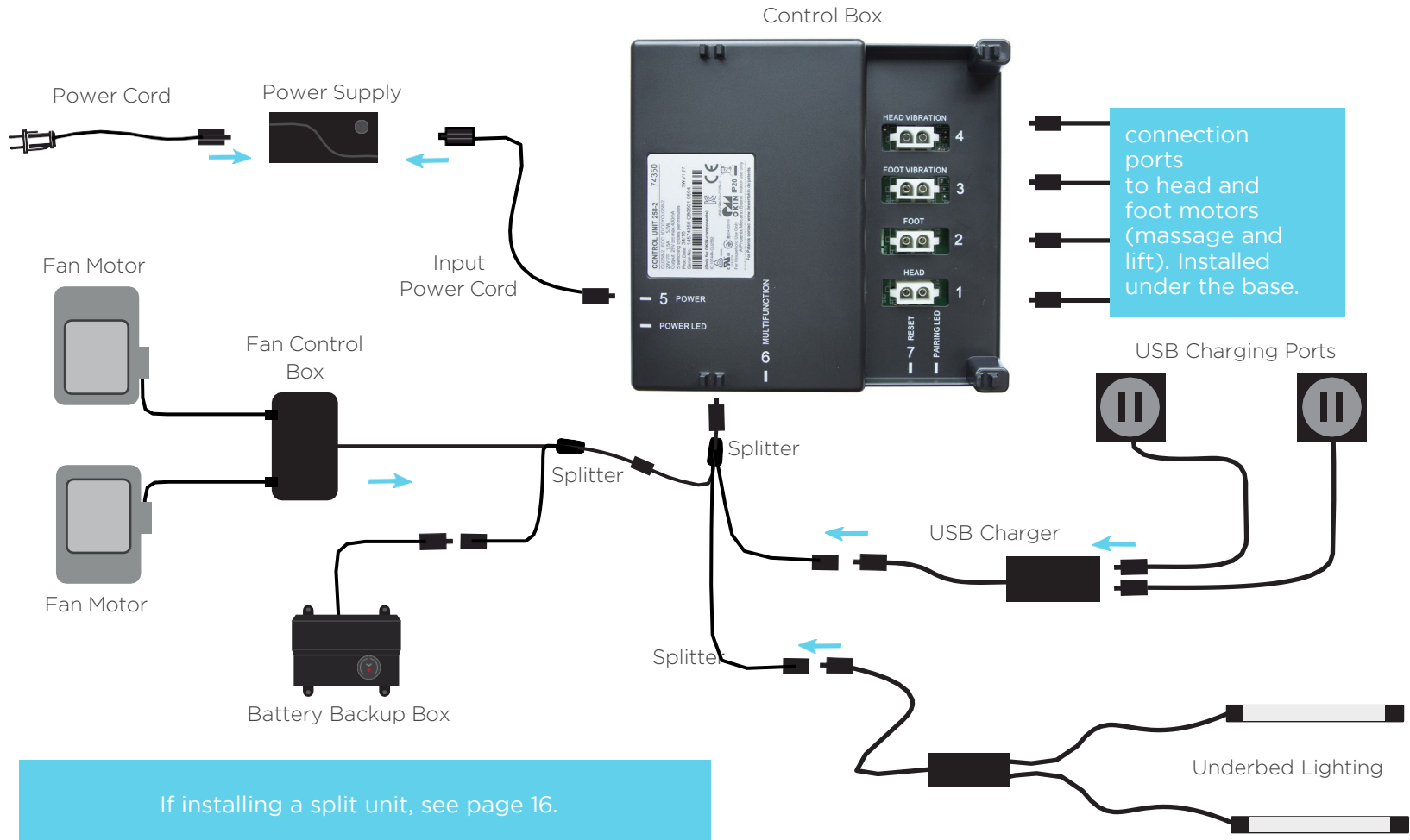
- \* These items are attached to the base for shipping purposes. Carefully remove from base and set aside.
- \*\* Two remotes are included with a Queen sized base.
- † Only included in Single and Single Long bases

# base overview



# quick reference guide

Not to scale. For illustration purposes only. Read all instructions before beginning installation.





# installation guide

Always use two people when setting up the base.

## STEP 1

Place the bed base box in a desired location with the bottom of the box facing up.

Remove the binding straps and packing materials, making sure not to puncture the box with any sharp objects.

## STEP 2

Remove the bed base from the box keeping the bottom of the base facing upwards.

## STEP 3

To install headboard brackets (sold separately), see instructions on page 17.

Legs are shipped fully assembled. Alternative heights in 3" increments can be achieved by removing leg segments.

To install the legs, thread the washer over the bolt of the leg with the recessed side facing the leg, and tighten by hand.

**Do not over tighten.**

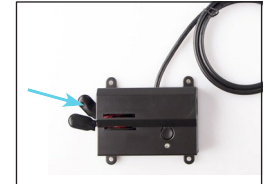


## STEP 4

If installing a split unit, see page 16.

Locate the battery backup box and install (2) 9-Volt batteries (not included).

(For operating instructions see page 14).



## STEP 5

Uncoil input power cord (connected to control box's power port) and plug into power supply.



## STEP 6

Uncoil the power cord and connect to the power supply. Place power supply on the ground and extend from the base. Ensure that the power supply and all attached cords are directed toward the desired surge protector.



# installation guide

## STEP 7

Carefully flip the base over on to its legs. Important: Two people are required to move the bed base. Do not drag across the floor. Do not rest frame on its side, excessive pressure may damage the legs.

## STEP 8

Plug the power cord into a power source. A surge protector is recommended.

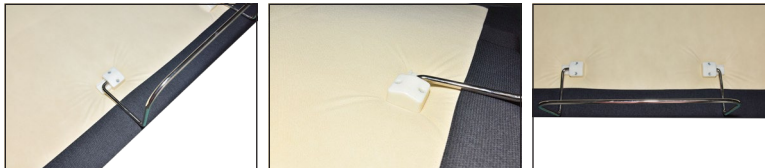
## STEP 9

Ensure batteries are correctly installed in the back of the remote.

Quickly test functions to verify proper setup before placing mattress on base. Return the base to a flat position before placing the mattress on top.

## STEP 10

Slide the left side of the mattress retainer bar into the bracket. Pull the retainer bar to the opposite bracket and secure the right side.



# mattress setup

## STEP 1

Always use two people when setting up the mattress. Place the mattress box in a desired location and remove the mattress from the box and bag, making sure not to puncture the box or mattress bag with any sharp objects while removing mattress from packing materials. Place the mattress on the bed base and ensure head and foot ends are properly aligned.



## STEP 2

Raise the mattress on the bed base to make hose connections by adjusting the bed base to TV preset using the remote control.



## STEP 3

Connect the mattress hoses to the bed base. Reach under the mattress and pull the hose and connector down to the bed base. Align the connector tabs of the mattress hose with the fan outlet of the bed base. Insert and twist until the connector is locked in place.



## STEP 4

Return the mattress and bed base to the flat position using the remote control flat button. Setup is now complete. Refer to remote control guide and user manual pages 10-13 and 16 for complete information regarding tandem setups and operation of the adjustable bed base and ACTIVEbreeze® systems.



Setup is now complete! Test all functions on remote.

# remote control

Remote Control arrives paired to the adjustable base.  
Three (3) AAA batteries are required to operate the remote.



## MESSAGE



### Head Zone Massage Control

Activates simple steady-state massage and toggles through 2 intensity levels. Low, high and off.



### Foot Zone Massage Control

Activates simple steady-state massage and toggles through 2 intensity levels. Low, high and off.



### Massage Wave Mode Control

Turns on and activates programmed massage mode. Toggles wave modes 1, 2, 3 and off. Intensity default to low.

There are 3 possible wave massage modes and 2 intensity levels to choose from. Press the Wave Massage Mode Selector to choose the desired mode (1,2,or 3), then use the Head Massage and/or the Foot Massage buttons to cycle through the available intensity levels. Once the massage mode is chosen, it will run for 30 minutes unless it is cancelled by pressing the Wave Massage Mode Selector button repeatedly until massage stops.

If one of the wave massage modes is not needed, pressing Head and/or Foot Massage buttons will initiate massage for those sections and cycle through 2 different intensity levels as well as "OFF".

# remote control

Remote Control arrives paired to the adjustable base.  
Three (3) AAA batteries are required to operate the remote.

## ADJUST



### Head Position Adjustments

Use to raise and lower the head section of your adjustable base.



### Foot Position Adjustments

Use to raise and lower the foot section of your adjustable base.

\* Not user programmable.

‡ Can be reprogrammed to user desired position.

The ZERO G, TV in Bed, Anti-Snore, and Favorite 1 in bed presets can be re-programmed to any position chosen by the user. Simply adjust the bed to the desired position, then hold any of the 4 buttons down until the remote backlight flashes twice. The button is now re-programmed.

To restore the buttons to their original positions, depress the One-touch Flat and Zero-G buttons simultaneously for 5 seconds. The remote backlight will flash twice to indicate the original positions have been restored.

## PRESET

ZERO G

### Zero G ‡

Adjusts your legs to relieve pressure off the lower back.



### Flat \*

One-Touch Flat lowers head and foot to flat position and turns off massage (if running).



### TV in Bed Preset Position ‡

Brings head and foot into position for viewing TV.



### Anti-Snore Preset Position ‡

Raises the head of the bed slightly to help open airways.



### Favorite 1 Preset Position ‡

Reprogrammable Preset Position.

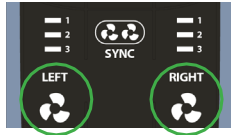


### Underbed LED lighting \*

Turn on/off underbed LED lighting.

# remote control

## FAN MODES



Right Side | Left Side



### Standard Fan Operation

Fan buttons will operate the fan(s) at the selected speed for up to 10 hours. Simply tap the LEFT or RIGHT Fan buttons to cycle through the levels of intensity. The LEFT and RIGHT side of the bed are identified below. For fan operation in a dual/sync setup, please refer to Tandem Mode.

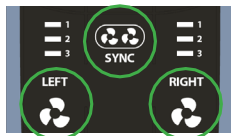
- 1 = Low
- 2 = Medium
- 3 = High

\*There is 1 fan in a TXL or CSK base. Any one of the 3 fan buttons will control the single fan.



### Fan Sync Mode

Pressing the SYNC button will simultaneously cycle the left and right fans through the fan speeds (Low/Medium/High/Off).

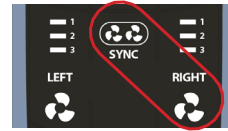
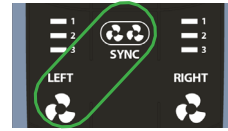


### Step-Down Mode

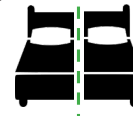
This mode will operate the fan at the selected speed selection for 5 hours, and then “step-down” to a lower speed for an additional 5 hours.

To access this mode, once the desired speed has been selected, press and hold the corresponding fan button for 3 seconds. The selected fan speed LED will blink twice (2x) to indicate that the “step-down” mode is activated.

- Low (for 5 hours) → Off
- Medium (for 5 hours) → Low (for 5 hours)
- High (for 5 hours) → Medium (for 5 hours)



Right Side | Left Side

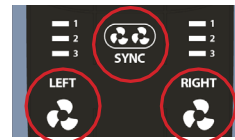
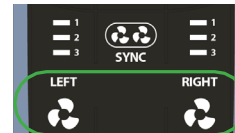


### Tandem Mode

This mode applies to a sync setup of TXL and CKS sizes only. When activated, the fan on the base assigned “left side” will be controlled by the LEFT fan button, and the fan on the base assigned the “right side” will be controlled by the right fan button. Please note, all other remote functions will control both bases simultaneously.

To activate this mode, press and hold the LEFT Fan and SYNC button at the same time on the remote control paired to the left side base. Backlight LED flash (2x) after 6 seconds indicates that Tandem Setup is on.

To Deactivate Tandem Mode and revert the system to normal setup, press and hold the RIGHT Fan and SYNC button at the same time. Backlight LED flash (2x) after 6 seconds indicates that Tandem Setup is off.



### Retail Demo Mode

Press and hold the LEFT and RIGHT buttons simultaneously for 3 seconds, after which backlight LED will flash 2x. The fans will operate at maximum intensity, and then shutoff automatically after 5 minutes.

To deactivate Retail Demo mode, press any one of the 3 fan control buttons to turn retail demo mode off.

# remote control pairing

## Remote Pairing

The original remote that comes in the box is already paired to the adjustable base. No further action is required. In the event that the remote is not paired with the base, follow the steps below.

### STEP 1

Locate the battery backup box and press the button TWICE. A light on the battery back up box will illuminate.



### STEP 2

Remove the back cover of the remote, press and hold down the PAIR button. The PAIR button will illuminate blue and start flashing. When the PAIR button stops flashing, the illuminated light on the battery backup box will go out. Release the PAIR button. The remote is now paired to the adjustable base.



2b. \*For pairing two Queen remotes only:

- With the remote that you just paired, press and hold Head Massage button for 6 seconds to activate "send mode". The backlights will begin flashing.
- Within 30 seconds, take the second remote and hold down the Foot Massage button for 6 seconds to activate "receive mode". Backlight will begin flashing and receive pairing from the first remote.

### STEP 3

Test all remote functions. If the remote buttons do not impact the adjustable base movements, please repeat the process again or call Tempur-Pedic customer service:

AU: 1300 306 062 | NZ: 0800 483 6789

### \*ALTERNATE REMOTE PAIRING PROCESS

Locate the control box (see parts list on page 5) and press the button twice. A green LED light will illuminate on the control box. On the back of the remote, press and hold the PAIR button. The PAIR button will illuminate blue and start flashing. When the PAIR button stops flashing, the green LED light on the control box will go out. Release the PAIR button. The remote is now paired to the adjustable base. For queen size, return to step 2b to pair the 2nd remote control.

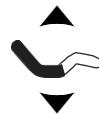
## Child Lock Feature

### Activate Child Lock



Press and hold HEAD UP and HEAD DOWN buttons together for approximately six (6) seconds. The remote backlight will flash twice. When the backlight light goes away, the remote is now in Child Lock. Pressing any buttons while in Child Lock will yield no movement to your adjustable base.

### Deactivate Child Lock



Press and hold FOOT UP and FOOT DOWN buttons together for approximately six (6) seconds. The remote backlight will flash twice. When the backlight light goes away, the remote is no longer in Child Lock. The remote and adjustable base will work normally.

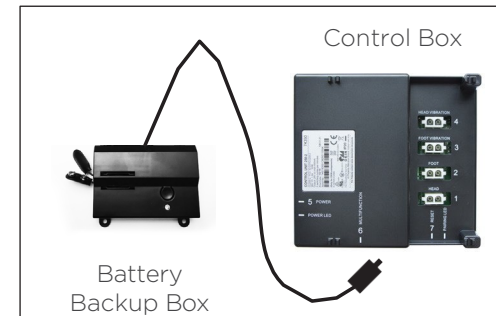
# emergency battery backup box

Two (2) 9 Volt batteries are required to operate the battery backup box feature and are NOT included.

## OVERVIEW

For emergency use only, in case of a power outage.

In the event that the base is stuck in an articulated position during a power outage, the battery backup box will return the base to a flat position. Batteries are not to be used for normal operation of the base.



## STEP 1

Install the 9 Volt batteries into the provided battery backup box.

*Do not mix brand name batteries.*

## STEP 2

Press and hold the button on the battery backup box to lower the base to flat position.





# connecting strap (optional)

Connecting straps are secured to the base frame upon delivery.

## OVERVIEW

If a split setup is being installed, plastic connecting straps are provided (one per base) to secure the bases together. Use both straps to secure the head and foot portions together.



## STEP 1

With the bases in their desired location, slightly loosen both legs to allow the strap to fit on the leg bolt, between the leg washer and frame.



## STEP 2

Slide side (a) of the connecting strap onto leg bolt. Swing the strap and connect side (b) to the leg bolt. Secure the strap by shifting to the left.



## STEP 3

Re-tighten legs. Do not over tighten. Use the remaining strap on other end of the base.

# syncing two bases (optional)

A Sync Cord is included with Single and Single Long size bases.

The Sync Cord connects the two control boxes to a single remote for the synchronization of two bases.

## STEP 1

Unplug the base(s) from power source.

## STEP 2

Disconnect the battery backup box cable from each control box or splitter cable (make note where the cable was plugged in).

## STEP 3

Connect the male end of each sync cord to control box or splitter cable. Insert it into the same port that you disconnected the battery backup box from in Step 2.

## STEP 4

Connect each battery backup box male connection to the sync cord female connection (Refer to illustration at right).

## STEP 5

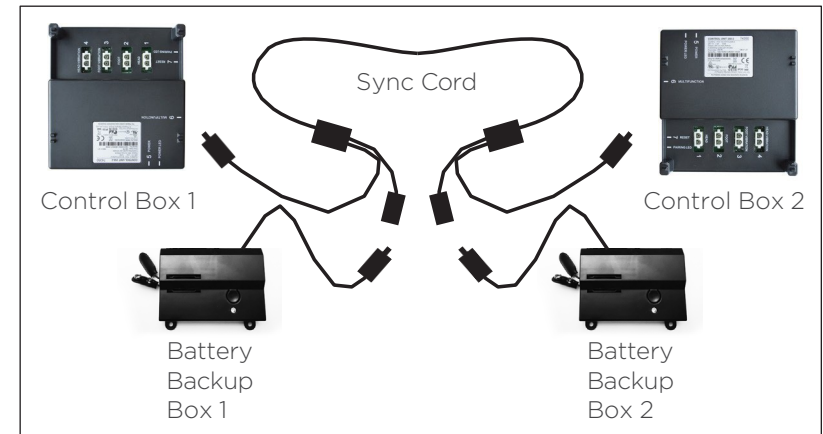
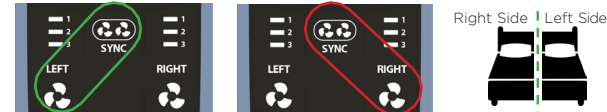
Plug bases back into the power source.

## STEP 6

Tandem mode applies to a sync setup of Single and Single Long sizes only. When activated, the fan on the base assigned “left side” will be controlled by the LEFT fan button, and the fan on the base assigned the “right side” will be controlled by the right fan button. Please note, all other remote functions will control both bases simultaneously. To activate this mode, press and hold the

LEFT Fan and SYNC button at the same time. Backlight LED flash (2x) after 6 seconds indicates that Tandem Setup is on.

To Deactivate Tandem Mode and revert the system to normal setup, press and hold the RIGHT Fan and SYNC button at the same time. Backlight LED flash (2x) after 6 seconds indicates that Tandem Setup is off.



## PERFORMANCE NOTES

If bases become mismatched, return both bases to the flat position to re-sync the bases.

# headboard bracket installation guide (optional)

Headboard Brackets are an optional accessory and are not included. A hex key is included with the accessory kit to complete installation. To install the headboard bracket, place the base on it's side.

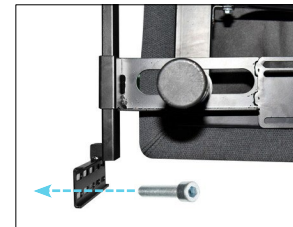
## STEP 1

- Align the hole in the bracket to the brass sleeve into which the leg threads. Hold the bracket in place and screw the leg into the base until it is snug. **DO NOT OVERTIGHTEN.** Too much force may cause the leg to spin freely.
- Align the tab with the hole in the frame (located towards the foot of the base) and use a short bolt and wingnut to secure the bracket. Make sure the bolt is tight.

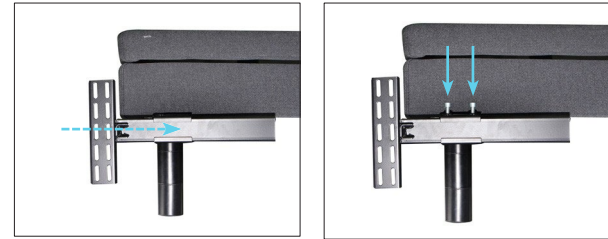


## STEP 2

- Measure the distance between the mounting holes on the headboard and install the T-Bracket to accommodate the headboard.
- To install the T-Bracket, slide the T-Bracket through the end of the headboard bracket. Align the flat side of the T-Bracket plate to the mounting holes on the headboard.



- Secure T-Bracket in place by inserting two short screws through top of bracket. Use hex key to tighten screws.



## STEP 3

Connect your headboard to the attachment plate using the remaining long screws or hardware that came with your headboard. The heads of the bolts will face outward. Use hex key to tighten bolts.

If one or more functions on the bed base have stopped operating:

## ADJUSTABLE BASE

- Check under the bed base to verify that the wired connections are secure and that there are no cords or bedding obstructing the movement of the base.
- Check to ensure the LED light is illuminated on the control box. If there is no light, verify that the input and power cords are properly connected.
- Check to ensure Child Lock is not activated. To deactivate Child Lock, press and hold FOOT UP and FOOT DOWN buttons together for approximately six (6) seconds. The remote backlight will flash twice. When the backlight light goes away, the remote is no longer in Child Lock. The remote and adjustable base will work normally.
- Unplug the base for 60 seconds to reset the electronic components.
- Plug bed base into a different electrical outlet, or test current outlet with another working appliance (a grounded, electrical surge protector is recommended).

## REMOTE

- Ensure that the remote batteries are properly installed and do not need replacing.

## ACTIVEbreeze°

- Check to ensure the LED light is illuminated on the fan control box. If there is no light, verify that the input and connecting cords are properly connected.
- Unplug the base for 60 seconds to reset the electronic components.
- Plug bed base into a different electrical outlet, or test current outlet with another working appliance (a grounded, electrical surge protector is recommended).
- Check to ensure the remote control you are using is paired to the bed base. If not, repeat the pairing instructions found on page 13.

*If your issue is not resolved by following the instructions above, please locate the serial number on the warranty card or back of the remote control and call the customer service team for your region.*

For TEMPUR customer service call AU: 1300 306 062 | NZ: 0800 483 6789

---

---

---

---

---

---

---

---

---

---

---

---

---

---

---

---

---

---

## Tempur Customer Service

Australia: 1300 306 062

New Zealand: 0800 483 6789

Email: [info@tempur.com.au](mailto:info@tempur.com.au)

Web: [www.tempur.com.au](http://www.tempur.com.au)

